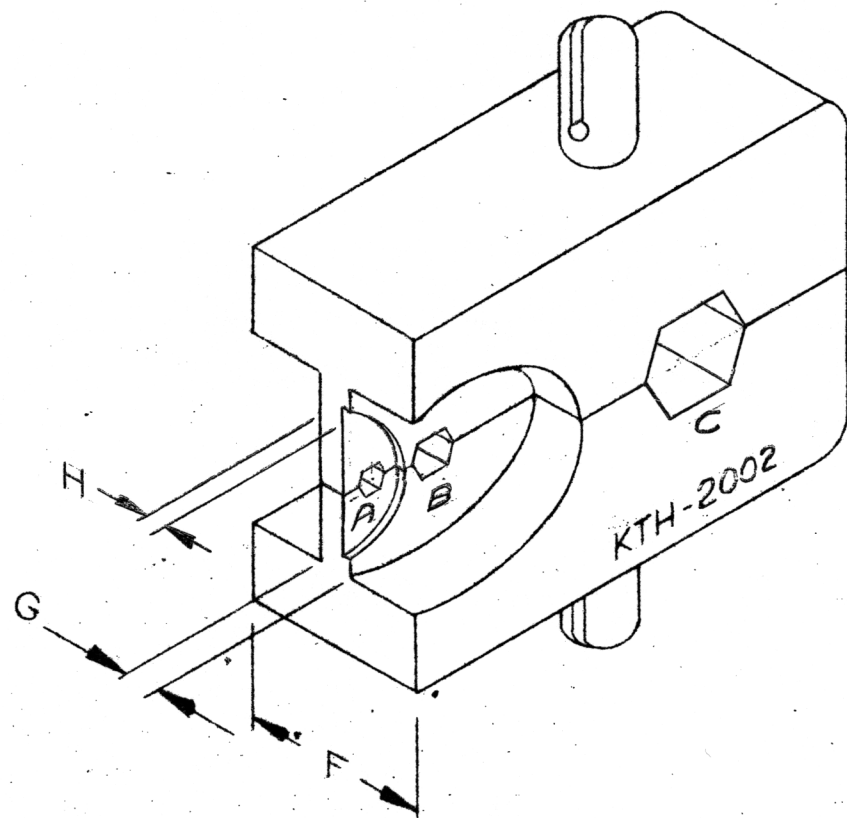




Kings Part	Military Part	Gender	Dimensions (in inches)				Cable Group	Cross Reference To:	Cable Procedure	
			A	B	C	D				
KTH-2002			0.069	0.100	0.255	0.400		Connector	NONE	



NOTES:

1. FOR USE WITH RG-59, 62, 71 & 210/U CABLE GROUPS.
2. MATERIAL: ALLOY STEEL; FINISH: BLACK OXIDE

HEX SIZES (ACROSS FLATS)				DIE WIDTH	WEB WIDTH			
A	B	C	D	F	G	H	I	
.069	.100	.255	—	.400	.093	.080	—	

UNLESS OTHERWISE SPECIFIED:

1. TOLERANCES: FRACTIONS & 2 PLACE DECIMALS $\pm .010$
3 PLACE DECIMALS $\pm .004$ ANGLES $\pm 0^\circ 30'$
2. REMOVE ALL BURRS, BREAK SHARP EDGES .005 MAX.
3. NO FILLETS PERMITTED.
4. SURFACE ROUGHNESS 63 MICROINCHES RMS MAX.
5. ALL DIMENSIONS PRIOR TO PLATING.

REVISIONS

ISSUE

CHANGES

CN 27547 C
AJ 2 DEC 85

REF:

FINISH

SPEC.

MATL.

SPEC.

CRIMP DIE

DRAWN J.G.L. DATE 15 JUN 72

APPR. DATE

KINGS ELECTRONICS
40 MARBLEDALE ROAD
TICKAHOE, N. Y. 10707

KTH-2002

R-50